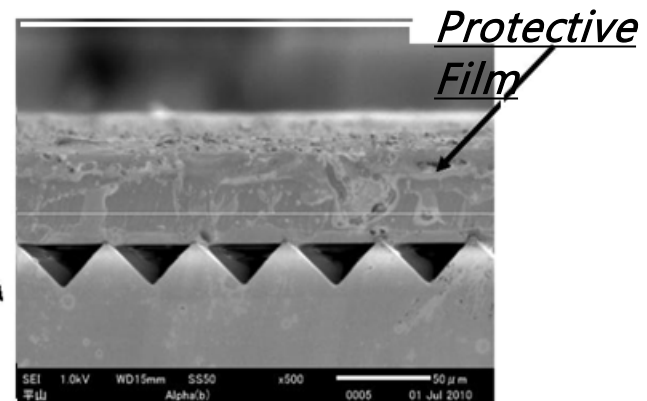
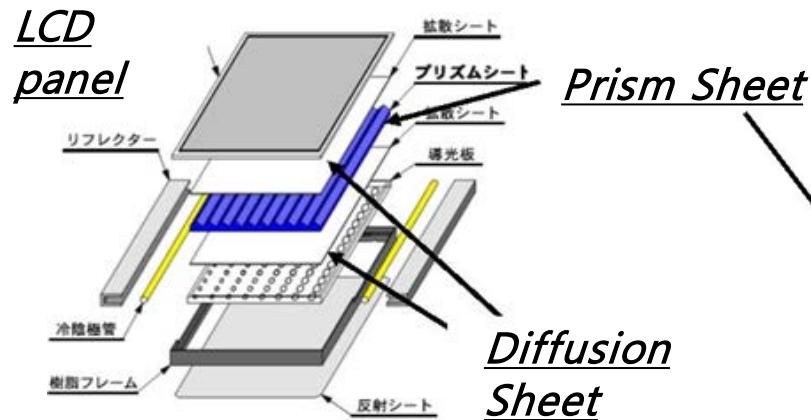
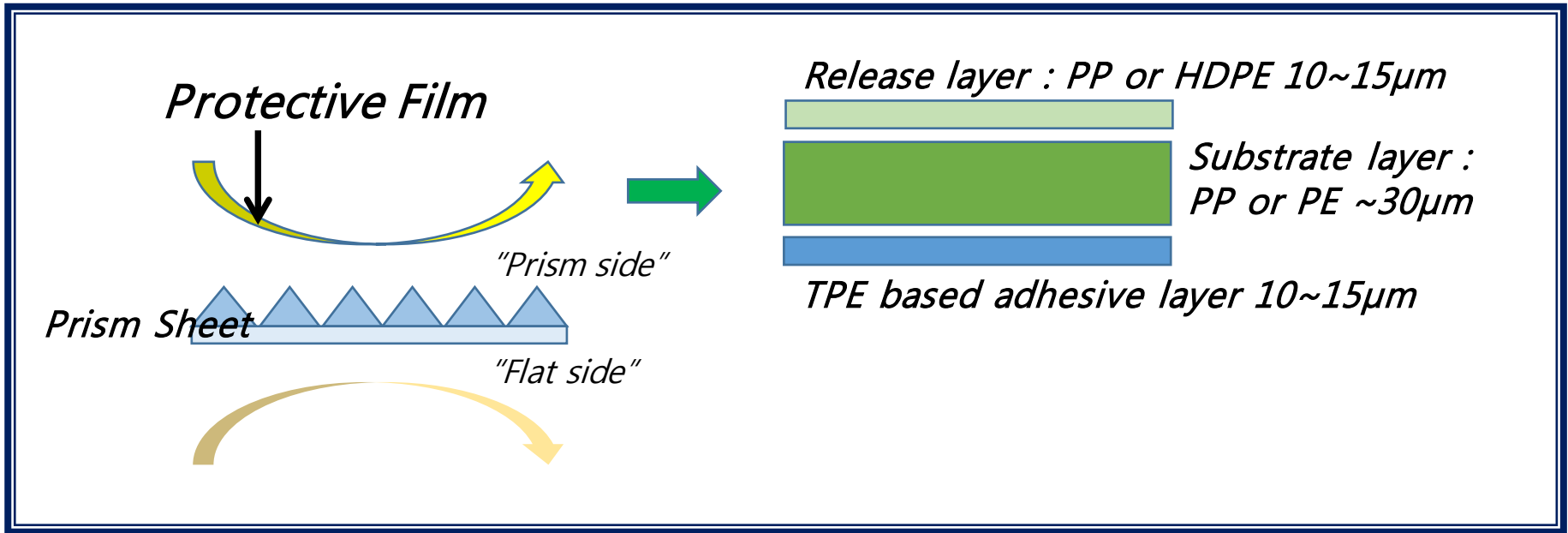


*Adhesive Compound For Protective Film*

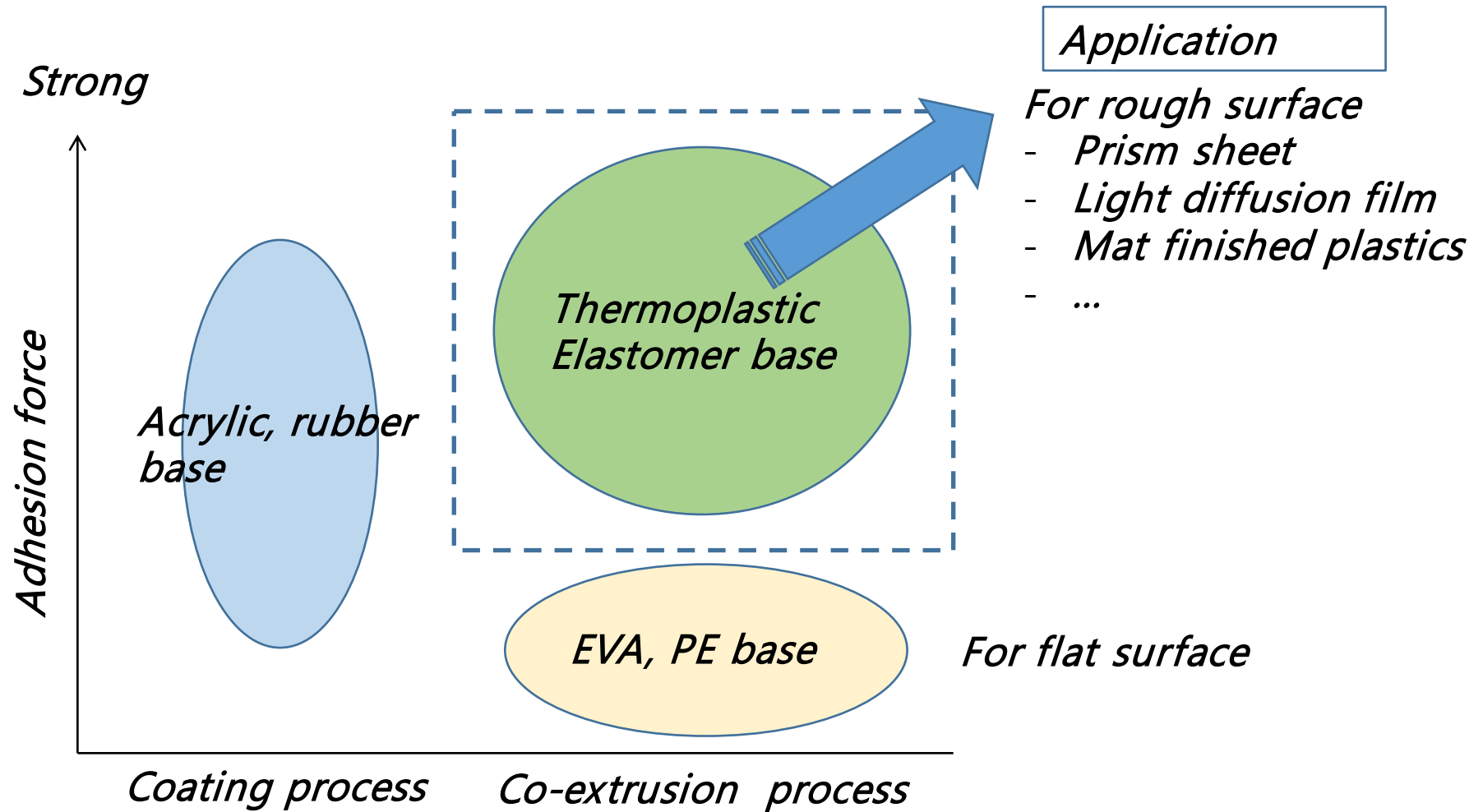
*Protective Film Compound : PFC SERIES*

*CNK TRADING CO., LTD.*

## ❖ Protective Film for Prism Sheet

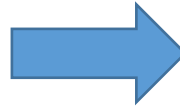
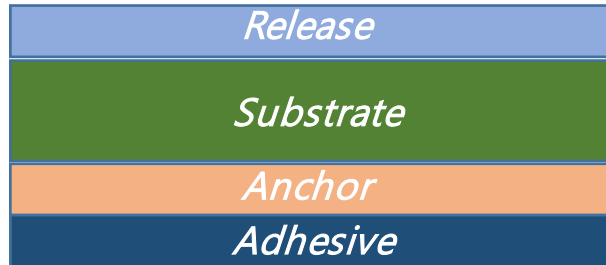


## ❖ Thermoplastic Elastomer Based Protective Film

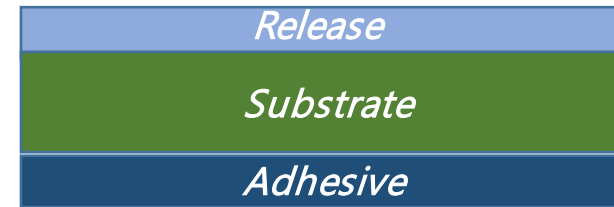


## ❖ Trends : Coating & Co-extrusion

### Coating Type



### Co-extrusion Type

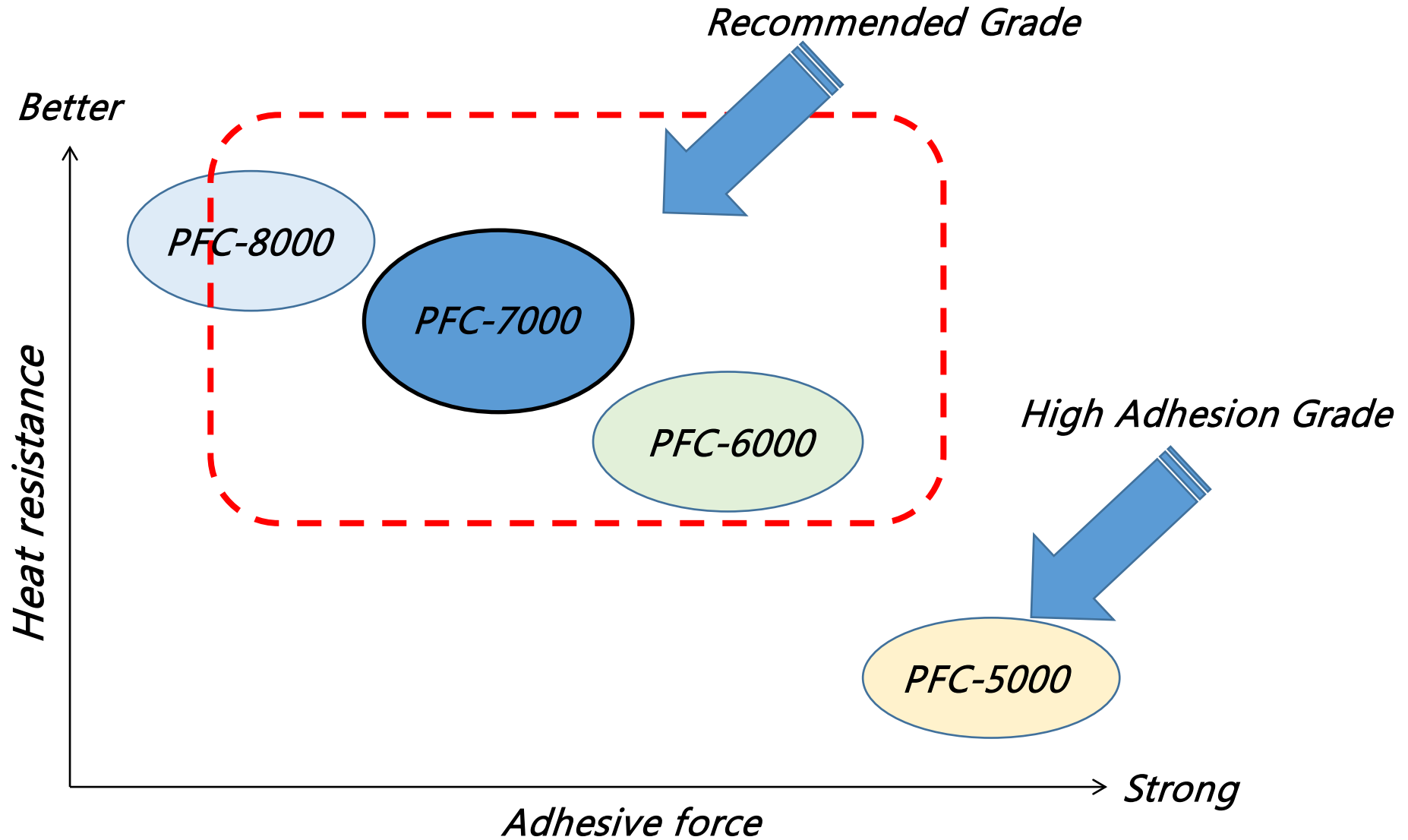


	Use	Adhesive Material	Process	Adhesive ness	Environment Friendly	TTL Cost
Coating Type	Top (Prism)	Acrylic Bse, Rubber Base	Extrusion-> Rolling->-> Coating-> Drying->...->Rolling	Low-High	No (Use Solvent)	High
Co-Extrusion Type	Top (Prism)	H-SBC+TF	Co-extrusion -> Rolling	High	Yes (Solvent Free)	Low
	Bottom (Flat)	EVA	Co-extrusion -> Rolling	Low	Yes (Solvent Free)	Low

## ❖ Requirements for Protective Film of Prism Sheet

- *Strong Adhesion ( to rough surface )*
- *Heat Resistance / Stability of Adhesion*
  - *No Peeling at 50~60deg C.*
- *Release-ability from Roll*
  - *Lower Adhesion*
  - *Release Layer*
- *High Quality*
  - *Low Fish-eye*
  - *No Pollution*

## ❖ Performance Image



## ❖ Physical Properties of PFC Series

Grade	Physical Form & Color	Specific Gravity ASTM D792	Hardness (Type A) ASTM D2240	Melt Index ASTM D1238 2.16kg@230°C	Adhesion ASTM D1876 Kgf
PFC-5000	Pellet / Clear	0.9±0.1	40±3	10.2	0.676
PFC-6000	Pellet / Clear	0.9±0.1	45±3	15.83	0.546
PFC-7000	Pellet / Clear	0.9±0.1	50±3	32.4	0.478
PFC8000	Pellet / Clear	0.9±0.1	53±3	34.2	0.362

*13mm wide on PET film*

*The statements, technical information and recommendations herein are believed to be accurate as of the date hereof. Since the conditions and methods of use of the product and of the information referred to herein are beyond our control, we expressly disclaim any and all liability as to any results obtained or arising from any use of the product or reliance on such information; NO WARRANTY OF FITNESS FOR ANY PARTICULAR PURPOSE, WARRANTY OF MERCHANTABILITY, OR ANY OTHER WARRANTY, EXPRESS OR IMPLIED, IS MADE CONCERNING THE GOODS DESCRIBED OR THE INFORMATION PROVIDED HEREIN.*